

## Slip Masterbatches

Additives which enhances and reduce handling issues in film application as we aware that plastic roll having tendency of tackiness hence cannot readily use in natural state without additive to ease their ability to separate and slide.

The most commonly used slip additives are **erucamide (C-22)** and **oleamide (C-18)**.

Oleamide migrates quicker "fast blooming". Oleamide is used where a low COF is needed in a short period of time,

Erucamide will provide films with a lower COF after some time.

lower vapour pressure and volatility, is used in higher temperature processing and it also stays at the surface longer,

Slower migration of erucamide can be advantageous in roll stock and on-line corona treatment.

**Stearamide** is another fatty acid.

Used together with erucamide or oleamide to provide an anti-blocking effect when film transparency is very important.

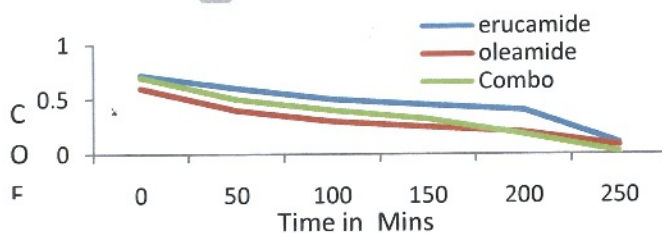
Range	Coefficient Of Friction
Low Slip	0.5 – 0.8
Medium Slip	0.2-0.40
High Slip	0.05-0.20

Slip property in film measured by Coefficient of friction.

Product Code	Active Content	Base Polymer	Dosage
<b>Additive D10-1061</b>	10 %	PE	2-3 % Depends up COF requirement
<b>Combo</b>			

Key Characteristics.

- Reduce tackiness
- Reduce film to Film & Film to metal Adhesion
- Reduce the viscosity polymer



**Application** – Blown , Cast Film & Extrusion Sheet.



**Disclaimer:**

All information is given in good faith. Above all data obtained under standard conditions with our testing facilities, may vary under different conditions. It is recommended to test the above properties to finalize the use of the product for specific and particular applications.